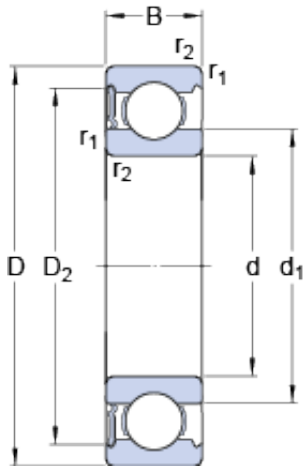




## BEARING-SINGAPORE (PTE)LTD.



150 mm x 225 mm x 35 mm SKF 6030-RS1 deep groove ball bearings

Bearing No. 6030-RS1

6030-RS1 Bearing 2D drawings and 3D CAD models

Size	225x150x35 mm
Bore Diameter	225 mm
Outer Diameter	150 mm
Width	35 mm
d	150 mm
D	225 mm
B	35 mm
d <sub>1</sub>	174.15 mm
D <sub>2</sub>	205.3 mm
r <sub>1,2</sub> - min.	2.1 mm
d <sub>a</sub> - min.	160 mm
d <sub>a</sub> - max.	173.9 mm
D <sub>a</sub> - max.	215 mm
r <sub>a</sub> - max.	2 mm
Basic dynamic load rating - C	125 kN
Basic static load rating - C <sub>0</sub>	125 kN
Fatigue load limit - P <sub>u</sub>	3.9 kN
Limiting speed	1700 r/min
Calculation factor - k <sub>r</sub>	0.025
Calculation factor - f <sub>0</sub>	16
d <sub>1</sub>	174.15 mm
D <sub>2</sub>	205.3 mm
r <sub>1,2</sub> min.	2.1 mm
d <sub>a</sub> min.	160 mm



## BEARING-SINGAPORE (PTE)LTD.

$d_a$ max.	173.9 mm
$D_a$ max.	215 mm
$r_a$ max.	2 mm
Basic dynamic load rating C	125 kN
Basic static load rating $C_0$	125 kN
Fatigue load limit $P_u$	3.9 kN
Calculation factor $k_r$	0.025
Calculation factor $f_0$	15.9
Mass bearing	4.25 kg