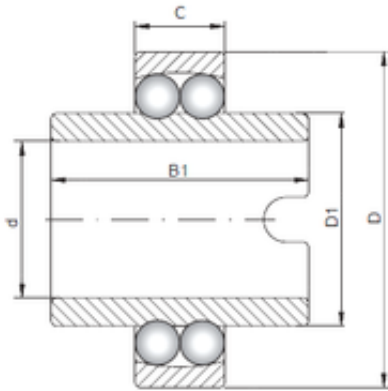




BEARING-SINGAPORE (PTE)LTD.

ISO 11209 self aligning ball bearings



Bearing No. 11209

| | |
|----------------|-------------|
| Size | 45x85x19 mm |
| Bore Diameter | 45 mm |
| Outer Diameter | 85 mm |
| Width | 19 mm |
| d | 45 mm |
| D | 85 mm |
| B1 | 58 mm |
| C | 19 mm |
| D1 | 57,7 mm |

11209 Bearing 2D drawings and 3D CAD models